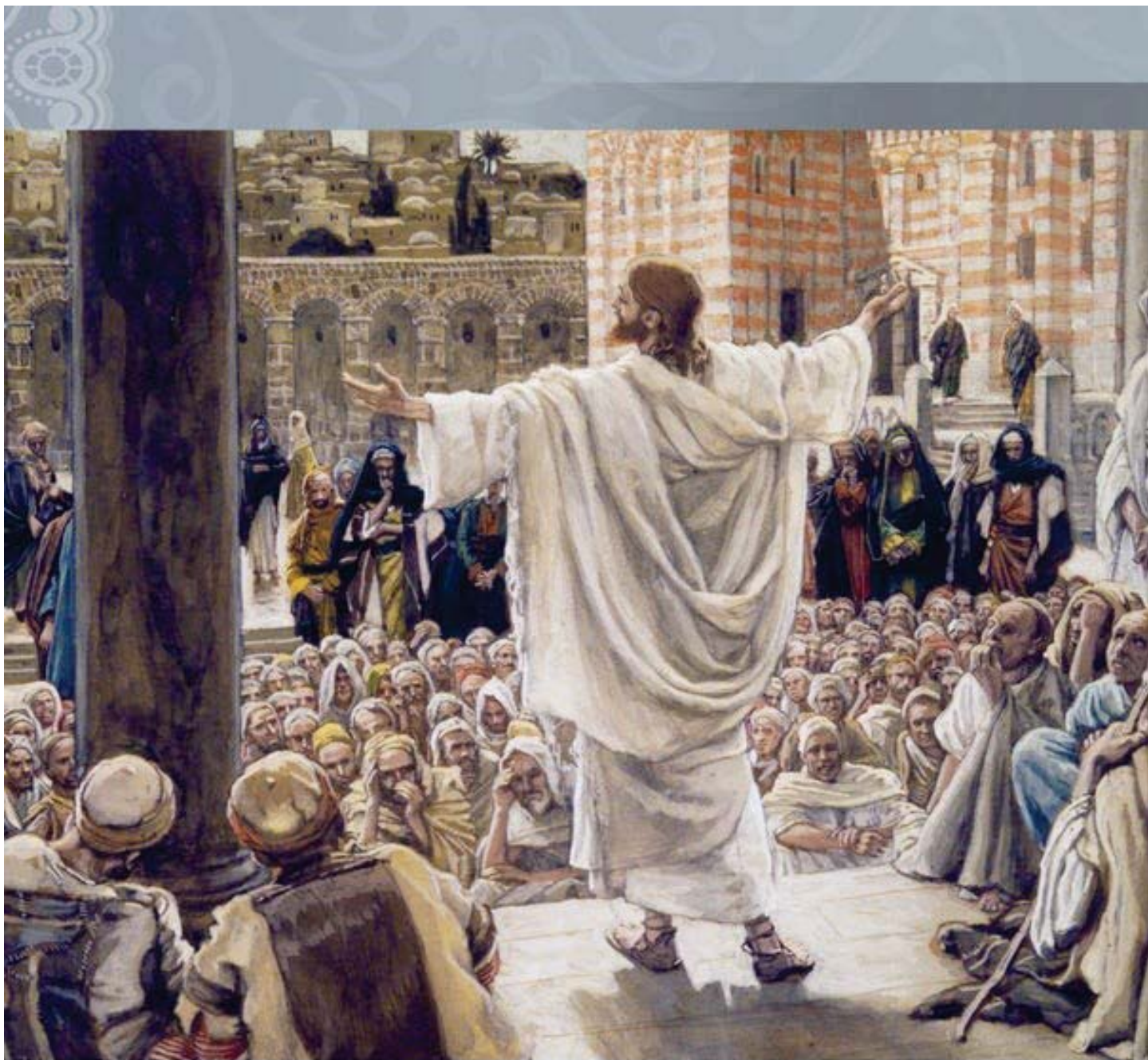


METHUEN CATHOLIC

THE PARISHES OF ST. MONICA AND ST. LUCY

AUG 14

2022



20th Sunday

I N O R D I N A R Y T I M E

Jesus said to his disciples: "I have come to set the earth on fire, and how I wish it were already blazing!" - Lk 12:49



THE LATEST ON ST. LUCY CANDLE SHRINE

The results have been tabulated for the next stage of growth for the Chapel of the Immaculate Conception and St. Lucy Candle Shrine. I know many have waited with anticipation on which beloved and holy saints got the most votes, determining those favored intercessors who will adorn this chapel. The top two patrons are St. Jude and St. Rita! They will be represented by statues that will occupy the two now empty pedestals. The next two favorites, St. Michael the Archangel and St. Peregrine, will each be represented in a major icon placed on the walls between the statues. Hopefully, someday beneath each icon will be placed an electric candle box that will allow us to have a greater number of

prayers symbolized. Lastly, two saints with a more local and contemporary feel will be displayed near the entrance, probably by prints with a realistic depiction: St. Charbel Makhlouf and St. Marie Rivier (foundress of the Sisters of the Presentation of Mary). The Shrine is open 9:00am to 7:00pm Monday through Friday. Currently the only weekend hours are Sunday 9:00am to 5:00pm, but that will include Saturday come September. Though the other doors will be locked much of the time, access to the main church for private prayer before the Lord in the Tabernacle is possible via access from the Shrine.

Thank you to all who voted for their favorite saints. By their prayers, may our parishes once again flourish for the glory of God.

SAVE THE DATE

The **Craft Fair**, sponsored by the Blessed Virgin Mary Sodality, will be held on **Saturday, October 22 from 9am-3pm.**

25+ Vendors/Crafters...Raffles...Baked Goods, and more!

ATTENTION CRAFTERS - only 6 tables left! Call Debi @ 978-884-8317 to reserve

**The Chapel of the Immaculate
Conception
St. Lucy Candle Shrine**

**Hours:
Monday - Friday 9am-7pm
Sunday 9am-5pm**

Welcome

to St. Monica and St. Lucy
Parishes. We're glad you
joined us!



STEM Teacher

Looking for a part time job engaging with students of all age groups? Are you a retired teacher, but miss working with students and the camaraderie of an amazing team? St. Monica School is seeking a part time teacher to implement a STEM curriculum across all grade levels K-8. The position is 12 hours a week (three mornings a week). Our job description is below:

St. Monica STEM Teacher

This position is responsible for assisting with the development of an elementary STEM-infused school setting, teaching all students weekly as a specialist teacher. The role includes planning and expanding efforts that support high quality integrative STEM and technology education for K-8 students.

The role requires innovative/creative teaching practices, strong organizational skills, effective communication, and the ability to work collaboratively with staff.

This teacher is responsible for helping K-8 grade students develop digital literacy, STEM knowledge, reasoning, and problem-solving skills that are essential to prepare students for success. The STEM teacher will help students understand that their ability to effectively use and create technology to solve complex problems are the new and essential literacy skills of the twenty-first century. St. Monica's goal is to prepare and inspire a much larger and more diverse number of students to pursue the innovative and creative careers of the future.

Responsibilities include developing, implementing, and maintaining curriculum documents and materials for grade level STEM projects. Skill in planning and developing lesson plans consistent with approved curriculum.

Establish and maintain a student-centered learning environment that provides students with opportunities to connect these concepts to real world application and work collaboratively with classroom teachers to support student learning and integrate STEM principles.

Attend applicable training, including but not limited to new teacher orientation, monthly professional development and in-services as needed.

Please email Principal@methuencatholic.org or call Mrs. Henderson at 978-686-1801 for more information.



VOLUNTEER OPPORTUNITIES

We are still in need of Money Counters at St. Monica's and Volunteer(s) to unlock the Shrine at St. Lucy's.

Money Counting takes place every-other-Monday morning at St. Monica's.

The Volunteer to Unlock the Shrine at St. Lucy's is needed for Saturday Mornings at 9:00am.

Please reach out to Kera to volunteer or for information about both of these opportunities.

methuencatholic@gmail.com
or 978-683-1193 ext. 26

Next Weekend--
August 20 & 21--our
parishes will take up a
second collection for
the Missionary Appeal
for the Propagation of
the Faith of Boston.
Thank-you for your
generosity towards the
missions.

GROWING WITH THE Gospel

CYCLE C



COLOR

Read the Gospel of the week and color the image.



Assumption of Mary • Luke 1:39-56

St. Monica School

Serving our community for over 60 years



Now accepting applications for our PK 3 Program. Students must be 3 by September 1.

We offer a 3 or 5-day schedule.

Each day our students come to learn, play and pray in a safe, faith filled environment.

Please call 978-686-1801 or visit www.saintmonicaschoolmethuen.org to learn more about our program, the admission process or schedule a tour. We also have a few openings in other grades. Please call for availability.



*Your child's educational journey can start here at St. Monica School.
We look forward to meeting you!*

St. Monica School
212 Lawrence St., Methuen

Prayer to the Assumption of the Blessed Virgin Mary

FATHER IN HEAVEN,
ALL CREATION RIGHTLY
GIVES YOU PRAISE,
FOR ALL LIFE AND ALL HOLINESS
COME FROM YOU.
IN THE PLAN OF YOUR WISDOM
SHE WHO BORE THE CHRIST
IN HER WOMB WAS RAISED
BODY AND SOUL IN GLORY
TO BE WITH HIM IN HEAVEN.
MAY WE FOLLOW HER EXAMPLE
IN REFLECTING YOUR HOLINESS
AND JOIN IN HER HYMN OF
ENDLESS LOVE AND PRAISE.

WE ASK THIS THROUGH
CHRIST OUR LORD.

AMEN.



The Feast of the Assumption on Monday, August 15th is not a holy day of obligation. Nonetheless, the 9am daily mass will be celebrated with the solemnity of Sunday mass. Staff will be on hand to serve as musicians and lector/acolyte.



REGISTRATION FOR FAITH FORMATION AND SACRAMENT PREPARATION IS NOW OPEN.

VISIT OUR WEBSITE TO REGISTER.

METHUENCATHOLIC.ORG

CLASSES START AS EARLY AS

KINDERGARTEN.

FIRST COMMUNION STARTS IN **SECOND GRADE.**

CONFIRMATION PREP LASTS TWO YEARS AND BEGINS IN THE **NINTH GRADE** (FRESHMAN YEAR).

QUESTIONS, CONTACT KARL AT
(978) 683 - 1193 ext. 35 |
faithformation.stlm@gmail.com

Are you an **ADULT** with a desire to receive the sacraments (*Baptism, Confirmation or Eucharist*) or learn more about your faith?

CONTACT KARL

...COMING SOON...



THE WEEK AHEAD

SUNDAY, AUGUST 14

- AA 7pm St. Lucy Lower Church
- Baptisms 1-2pm St. Monica Church

MONDAY, AUGUST 15

- Solemnity of the Assumption of the BVM
- Mass 9 am St. Lucy Church
- Boy Scouts 7pm St. Lucy Lower Church

TUESDAY, AUGUST 16

- Mass 9 am St. Lucy Church
- Rosary For Priests 6 pm Gethsemane Chapel

WEDNESDAY, AUGUST 17

- Prayer and Study 9:30 -11 am (Zoom)
- Alanon 10-11:15 am St. Lucy Lower Church
- Eucharistic Adoration 6-7pm St. Lucy Church

THURSDAY, AUGUST 18

- Mass 9am St. Lucy Church
- Rosary 6pm (Zoom)
- AA 6:30 pm St. Lucy Lower Church Hall
- SVDP Meeting 6:30-8pm St. Monica House

FRIDAY, AUGUST 19

- Mass 9 am St. Lucy Church
- Eucharistic Adoration 2-5 pm Gethsemane Chapel
- Confessions 4-5 pm Gethsemane Chapel

SATURDAY, AUGUST 20

- Faith2Fitt 8am Methuen Track
- Mass 9am St. Monica Church
- Private Baptism 1-2pm St. Monica Church
- Bettor's Anonymous 2 pm St. Monica SVDP Hut
- Confessions 3-3:45 pm Gethsemane Chapel and St. Lucy Church

THE MARIE RIVIER ASSOCIATES (MRA) OF THE PRESENTATION OF MARY

We hold our monthly meeting on the second Tuesday of the month after the 9am mass at St. Lucy Church. The first meeting is September 13. All men and women are invited especially those who are associates or have made the Rivier Retreat.

This year our topic is
7 Secrets of Divine Mercy by Vinny Flynn.

Please contact Maureen Slattery for more information or to reserve a book (\$15) and a spot.

twigs5mcs@gmail.com

OFFERTORY | JULY 30 & 31

St. Monica - \$7,207.⁰⁰

St. Lucy - \$4,451.⁰⁰

Weekly Offertory needed to sustain parish operations: St. Monica - \$10,000 | St. Lucy - \$6,000

Thank you for your continued generous contribution to the mission of our parishes.



Yes, I CAN... We are in need of peanut butter, jelly, soups, canned spaghetti, boxed spaghetti, spaghetti sauce, cereal, canned fruit, mashed potatoes. Donations can be dropped off anytime at the entrances to St. Lucy and the side door of Gethsemane Chapel at St. Monica Church.

BULLETIN DEADLINE

Mondays @ 10 am. Please email all bulletin notices to parishoffice.stlm@gmail.com.

OFFICE HOURS

Monday-Friday | 9:00am - 2:00pm

BAPTISMS 2nd Sunday of the month at 1:00pm St. Monica's | 3rd Sunday of the month at 11:30am at St. Lucy's

MARRIAGES Please call the Parish Offices at least six months prior to the proposed wedding date and before booking a reception hall.

MASS SCHEDULE

SAT 4 pm (VIGIL) both parishes

SUN 9 am & 11 am St. Monica | 10 am St. Lucy

MON/TUES/THURS/FRI 9 am St. Lucy

SATURDAY 9 am St. Monica

CONFESSIONS

3 - 3:45 pm both parishes | Sat

4 - 5pm Gethsemane Chapel | Fri

6 - 7pm St. Lucy Church | Wed

EUCCHARISTIC ADORATION

2 - 5 pm Friday Gethsemane Chapel

6 - 7 pm Wednesday St. Lucy Church

METHUEN CATHOLIC

THE PARISHES OF ST. MONICA AND ST. LUCY

PARISH OFFICES

254 Merrimack Street, Methuen, MA 01844

(978) 683 - 1193 or (978) 686 - 3311

www.methuencatholic.org

Hours: Mon-Fri, 9:00am - 2:00pm



ST. VINCENT DE PAUL SOCIETY

(978) 686 - 9573

PASTORAL STAFF

Fr. Darin Colarusso

Pastor

Fr. Joseph D'Onofrio

Parochial Vicar

Deacon John Pierce

Permanent Deacon

Deacon John Kobrenski

Permanent Deacon

Kera Mansour

Business Manager

methuencatholic@gmail.com

Karl Jackson

Director of Parish Life

faithformation.stlm@gmail.com

Eric Berthiaume

Music Director

Sharon Waning

Music Ministry (St. Lucy)

Kevin Fitzgerald

Facilities (St. Lucy) / RCIA

Christine Ryan

Administrative Assistant

parishoffice.stlm@gmail.com



ST. MONICA SCHOOL

212 Lawrence Street, Methuen, MA 01844

(978) 686 - 1801

www.saintmonicaschoolmethuen.org

SCHOOL STAFF

Donna Henderson

Principal

Sharon Tully

Administrative Assistant

smsoffice@methuencatholic.org

INTROIT*Ps 84 (83): 10, 11*

Turn your eyes, O God, our shield; and look on the face of your anointed one;
one day within your courts is better than a thousand elsewhere.

PROCESSIONAL HYMN*This Day God Gives Me*

1. This day God gives me strength of high heav - en,
2. This day God sends me strength to sus - tain me,
3. God's way is my way, God's shield is round me,

1. sun and moon shin - ing, flame in my hearth,
2. might to up - hold me, wis - dom as guide.
3. God's host de - fends me, sav - ing from ill.

1. flash - ing of light - ning, wind in its swift - ness,
2. Your eyes are watch - ful, your ears are lis - t'ning,
3. An - gels of heav - en, drive from me al - ways

1. deeps of the o - cean, firm - ness of earth.
2. your lips are speak - ing, friend at my side.
3. all that would harm me, stand by me still.

PENITENTIAL ACT - GLORIA*Refer to Pew Card***FIRST READING***Jer 38: 4-6, 8-10*

In those days, the princes said to the king: "Jeremiah ought to be put to death; he is demoralizing the soldiers who are left in this city, and all the people, by speaking such things to them; he is not interested in the welfare of our people, but in their ruin." King Zedekiah answered: "He is in your power"; for the king could do nothing with them. And so they took Jeremiah and threw him into the cistern of Prince Malchiah, which was in the quarters of the guard, letting him down with ropes. There was no water in the cistern, only mud, and Jeremiah sank into the mud.

Ebed-melech, a court official, went there from the palace and said to him: "My lord king, these men have been at fault in all they have done to the prophet Jeremiah, casting him into the cistern. He will die of famine on the spot, for there is no more food in the city." Then the king ordered Ebed-melech the Cushite to take three men along with him, and draw the prophet Jeremiah out of the cistern before he should die.

RESPONSORIAL PSALM*Ps 40 (39): 14b; V 2, 3, 4, 18 · L*

R. Lord, come to my aid!

I have waited, waited for the LORD, and he stooped toward me.

The LORD heard my cry. He drew me out of the pit of destruction,
out of the mud of the swamp; he set my feet upon a crag; he made firm my steps.

And he put a new song into my mouth, a hymn to our God.
Many shall look on in awe and trust in the LORD.

Though I am afflicted and poor, yet the LORD thinks of me.
You are my help and my deliverer; O my God, hold not back!

SECOND READING

Heb 12: 1-4

Brothers and sisters: Since we are surrounded by so great a cloud of witnesses, let us rid ourselves of every burden and sin that clings to us and persevere in running the race that lies before us while keeping our eyes fixed on Jesus, the leader and perfecter of faith. For the sake of the joy that lay before him he endured the cross, despising its shame, and has taken his seat at the right of the throne of God. Consider how he endured such opposition from sinners, in order that you may not grow weary and lose heart. In your struggle against sin you have not yet resisted to the point of shedding blood.

ALLELUIA

Jn 10: 27 · L



My sheep hear my voice, says the Lord; I know them, and they follow me.

GOSPEL

Lk 12: 49-53

Jesus said to his disciples: "I have come to set the earth on fire, and how I wish it were already blazing! There is a baptism with which I must be baptized, and how great is my anguish until it is accomplished! Do you think that I have come to establish peace on the earth? No, I tell you, but rather division. From now on a household of five will be divided, three against two and two against three; a father will be divided against his son and a son against his father, a mother against her daughter and a daughter against her mother, a mother-in-law against her daughter-in-law and a daughter-in-law against her mother-in-law."

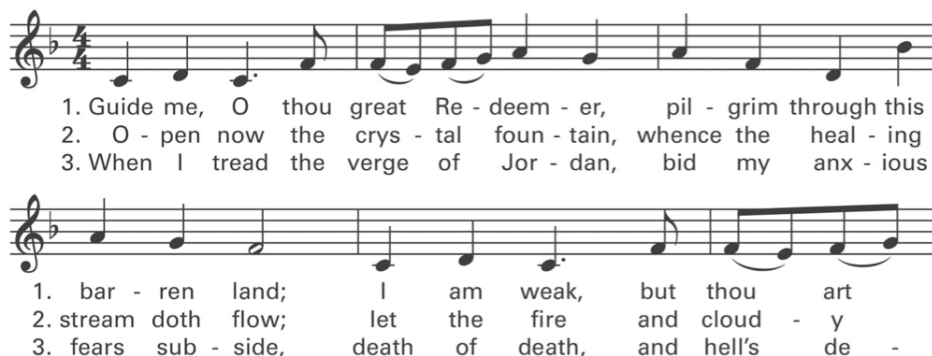
COMMUNION ANTIPHON

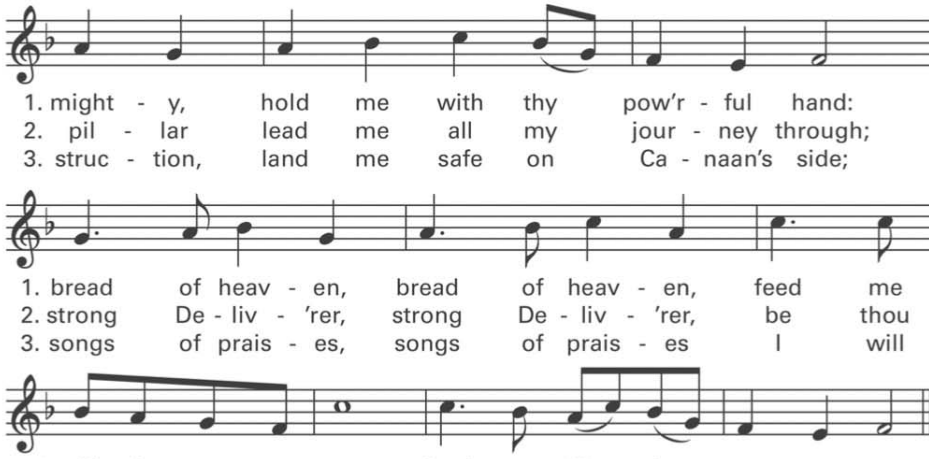
Ps 130 (129): 7

With the Lord there is mercy; in him is plentiful redemption.

COMMUNION HYMN

Guide Me Now, O Great Redeemer






1. might - y, hold me with thy pow'r - ful hand;
 2. pil - lar lead me all my jour - ney through;
 3. struc - tion, land me safe on Ca - naan's side;

1. bread of heav - en, bread of heav - en, feed me
 2. strong De - liv - 'rer, strong De - liv - 'rer, be thou
 3. songs of prais - es, songs of prais - es I will

1. till I want no more, feed me till I want no more.
 2. still my strength and shield, be thou still my strength and shield.
 3. ev - er give to thee, I will ev - er give to thee.

RECESSIONAL HYMN*The Church's One Foundation*


1. The Chur-ch's one foun - da - tion Is Je - sus Christ her Lord;
 2. E - lect from ev - 'ry na - tion, Yet one o'er all the earth,
 3. 'Mid toil and trib - u - la - tion, And tu - mult of her war,

1. She is his new cre - a - tion By wa - ter and the word:
 2. Her char - ter of sal - va - tion, "One Lord, one faith, one birth!"
 3. She waits the con - sum - ma - tion Of peace for - ev - er - more,

1. From heav'n he came and sought her To be his ho - ly bride;
 2. One ho - ly Name she bless - es, Par - takes one ho - ly food,
 3. Till with the vi - sion glo - rious Her long - ing eyes are blest,

1. With his own blood he bought her, And for her life he died.
 2. And to one hope she press - es With ev - 'ry grace en - dued.
 3. And the great Church vic - to - rious Shall be the Church at rest.

PRAYER FOR PASTORAL PLANNING

Almighty Father, give us the grace to follow where your Son leads.
 Make our priests holy and effective ministers of the Gospel.
 Make our staff and parishioners dedicated and enthusiastic disciples.
 May we all be docile to the Holy Spirit and obedient to your will.
 Help us make our parishes a light for those seeking you
 And a safe harbor for those who hope in you.
 We entrust ourselves to the Blessed Virgin Mary as we pray: Hail Mary, full of grace...

Excerpts from the English translation of The Roman Missal © 2010, International Commission on English in the Liturgy Corporation. All rights Reserved.
 Excerpts from the Lectionary for Mass for Use in the Dioceses of the United States of America, second typical edition © 2001, 1998, 1997, 1986, 1970 Confraternity of Christian Doctrine, Inc., Washington, DC. Used with permission. All rights reserved. No portions of this text may be reproduced by any means without permission in writing from the copyright owner. This reproduced work was produced using Source & Summit (sourceandsummit.com) by subscriber #002480 and is subject to those terms and restrictions governing its use.

Reprinted with permission under OneLicense #A-730213

ST. MONICA PARISH

Saturday, August 13

9:00am *Living Intentions*
 Sabah Khalife
 Bernie & Margaret Maher
 Paul Jackson
 Marie Monte
 For those without shelter
 from summer heat

4:00pm Mary Palermo

Sunday, August 14

9:00am Manuel & Fernanda Corteiro
 Evelyn & Jose Freitas
 Frank O'Connell
 Najla Hayek
 Y. Beatrice Beeley

11:00 am Michael & Susan DeSimone
 Joseph & Marie Aiesi

Saturday, August 20

9:00am Dolores Torosian

4:00pm Shirley Ludwig

Sunday, August 21

9:00am Joseph Lavigne
 Yvette Moran
 Michael Milnes
 Dick Doherty
 Nancy Tardif
 Elizabeth Pierce

11:00 am Deceased members of the
 Finocchiaro Family

ST. LUCY PARISH

Saturday, August 13

4:00pm For the Parishioners of
 St. Monica & St. Lucy Parishes

Sunday, August 14

10:00am Dorothy Boragine
 Lucy Boragine
 Isidore Travato
 Eileen Fullen

Monday, August 15

9:00am Solemnity of the Assumption

Tuesday, August 16

9:00am Holy Souls in Purgatory

Thursday, August 18

9:00am Elinor Alaimo

Friday, August 19

9:00am Gennaro, Alfonzo, and Filomena Buco

Saturday, August 20

4:00pm Roland & Yvonne Soucy

Sunday, August 21

10:00am For the Parishioners of
 St. Monica & St. Lucy Parishes

BULLETIN SPONSOR OF THE WEEK

Barod Home Care Inc. | barodhomecare.com
 781-281-2764

PRAY FOR OUR PRIESTS

| DAY | DATE | PRIEST | SEMINAR. |
|--------|----------|-----------------------|--------------------|
| Sunday | 08/14/22 | Fr. Christopher Casey | Vincenzo Caruso |
| Mon | 08/15/22 | Pope Francis | Gabriel Hanley |
| Tues | 08/16/22 | Fr. William Robinson | Mateus Martin |
| Wed | 08/17/22 | Fr. Paul Curran | Paolo Strudthoff |
| Thurs | 08/18/22 | Fr. Darin Colarusso | Francis Trewin |
| Friday | 08/19/22 | Fr. John Carmichael | Aaron Arbizo |
| Sat | 08/20/22 | Fr. Richard C. Conway | Matthew Harrington |



PRAYER CORNER

Please pray for Malcolm G., Molly F., Tim L., Patrice K., Nancy B., Shaylee T., Saba K., & Molly P.

Please pray for Joan S. Mansour and Mary McGowan whose funerals we recently celebrated. May the souls of all the faithful departed rest in peace.

Call to get an ADT Security System + Get a \$100 ADT Visa Reward Card FREE*

ADT's 24/7 monitoring plus top of the line security cameras help ensure your loved ones are safe – whether you're out and about or in the next room.



\$100 ADT Visa
Reward Card
FREE*

*With 36-month monitoring contract. Early termination and installation fees apply. Reward card issued by MetaBank®, N.A., Member FDIC. Card terms and expiration apply. For full terms, see below.



\$100 value
BONUS†
ADT Visa Reward Card

Choose ADT today
and receive a \$100 Visa
Reward Card to spend
on anything you want!

Call today to speak with a home security expert
1-877-460-2036



*\$100 ADT Visa Reward Card: Requires 36-month monitoring contract starting at \$28.99/mo. (24-month monitoring contract in California, total fees from \$495.76), and enrollment in ADT EasyPay. Requires minimum purchase price of \$449. One (1) Visa Reward Card valued at \$100 is redeemable seven (7) days after system is installed, wherein an email is sent to the customer's email address associated with their account with a promo code. The customer must validate the promo code on the website provided in the email and a physical card will be sent in the mail. Installation must occur within 60 days of offer expiration date to receive card. Applicable to new and resale sale types only. Card is issued by MetaBank®, N.A., Member FDIC, pursuant to a license from Visa U.S.A. Inc. No cash access or recurring payments. Can be used everywhere Visa debit cards are accepted. Card valid for up to 6 months; unused funds will forfeit after the valid thru date. Card terms and conditions apply. General: Additional charges may apply in areas that require guard response service for municipal alarm verification. System remains property of ADT. Local permit fees may be required. Prices and offers subject to change and may vary by market. Additional taxes and fees may apply. Satisfactory credit required. A security deposit may be required. Simulated screen images and photos are for illustrative purposes only.

©2021 ADT LLC dba ADT Security Services. All rights reserved. ADT, the ADT logo, 800.ADT.ASAP and the product/service names listed in this document are marks and/or registered marks. Unauthorized use is strictly prohibited. Third-party marks are the property of their respective owners. License information available at www.ADT.com/legal or by calling 800.ADT.ASAP. Licenses: AL 233, 234, 458, 506, 1519, CA ACO7155, 974443, PPO1020288; FL EF0001121; LA F1639, F1640, F1643, F1654; MA 172C; NC Licensed by the Alarm Systems Licensing Board of the State of North Carolina; 2736-CSA, 2397-CSA, 2381-CSA; NJ Burg & Fire Business Lic. #54BF00046300, 200 East Park, Ste. 200, Mt. Laurel, NJ 08054; NY 12000305615; PA 090797; MS 1501951. DF-CD-NP-Q421

DENTAL Insurance

If you've put off dental care, it's easy to get back on track. Call Physicians Mutual Insurance Company now for inexpensive dental insurance. Get help paying for the dental care you need.

**Getting back to the dentist
couldn't be easier!**

CALL TODAY
1-866-615-0296

Dental50Plus.com/pilots

Get your **FREE** Information Kit

Product not available in all states. Includes the Participating (in GA: Designated) Providers and Preventive Benefits Rider. Acceptance guaranteed for one insurance policy/certificate of this type. Contact us for complete details about this insurance solicitation. This specific offer is not available in CO, NY; call 1-800-969-4781 or respond for similar offer. Certificate C250A (ID: C250E; PA: C250Q); Insurance Policy P150 (GA: P150GA; NY: P150NY; OK: P150OK; TN: P150TN). Rider kinds: B438, B439 (GA: B439B).

6208-0721

TRUGREEN



Save now with
50% OFF*
Your First Application



AMERICA'S #1
LAWN CARE COMPANY

Get the most out of
your lawn this summer.

SCHEDULE YOUR APPOINTMENT TODAY!

1-855-614-6526

*Requires purchase of annual plan. Special price is for first Lawn application only. Requires purchase of annual plan, for new residential EasyPay or PrePay customers only. Valid at participating TruGreen locations. Availability of services may vary by geography. Not to be combined with or used in conjunction with any other offer or discount. Additional restrictions may apply. Consumer responsible for all sales tax. †Purchase of annual lawn plan required for Healthy Lawn Analysis, which is performed at the first visit. ‡Guarantee applies to annual plan customers only. BBB accredited since 07/01/2012. ©2022 TruGreen Limited Partnership. All rights reserved. In Connecticut, B-0153, B-1380, B-0127, B-0200, B-0151.

GENERAC

**Prepare
for power
outages
today**

WITH A HOME
STANDBY GENERATOR

**\$0 MONEY DOWN + LOW MONTHLY
PAYMENT OPTIONS**

Contact a Generac dealer for full terms and conditions

**REQUEST A
FREE QUOTE**

CALL NOW BEFORE THE
NEXT POWER OUTAGE

(855) 401-9893



FREE 7-Year Extended Warranty*
– A \$695 Value!

*To qualify, consumers must request a quote, purchase, install and activate the generator with a participating dealer. Call for a full list of terms and conditions.

KENNETH H. POLLARD FUNERAL HOME



**Our Family
Helping Your Family**
978-687-7300
pollardfuneralhome.com
233 Lawrence St., Methuen

IF YOU LIVE ALONE YOU NEED A MEDICAL ALERT At HOME or AWAY

* GPS * Fall Alert * 24/7 * 365 Monitoring
Ambulance * Police * Fire * Family/Friends



MDMedAlert™

As Low As **\$19⁹⁵**/month



GPS Mobile Above

No Contract • No Fees • Easy Setup • md-medalert.com **CALL 800-890-8615**

Monument Sales • Cemetery Lettering



978-674-7035
217 Merrimack St., Methuen



978-686-1872 Piro's Italian Bakery
Fax: **978-686-1878** 300 Merrimack St. • Methuen

CATAUDELLA FUNERAL HOME
SINCE 1929
126 PLEASANT VALLEY STREET, METHUEN, MASSACHUSETTS 01844
Proud affiliate of Carriage Services, Inc.
3040 Post Oak Blvd., Suite 300, Houston, TX 77056
Tel: 713-332-8400
978-685-5379 www.cataudellaafh.com

841 Main Street
Tewksbury, MA 01876
(978) 851-9103
Rosaries from Flowers
"Handmade from the Flowers
of your Loved One"
www.rosariesfromflowers.com

**AD SPACE
AVAILABLE**
617-779-3771

Jen Hamilton Your Friend In Real Estate
CALL TODAY FOR YOUR FREE MARKET ANALYSIS!
Celebrating 37 Years in Real Estate!
508-954-7941 • jennifer.bower9@comcast.net



**AD SPACE
AVAILABLE**
617-779-3771

Spring Lawn Care Service

Leaf Cleanup, Fertilizing, Overseeding
Aeration, Dethatching, Pruning
Hedging, Mulch Install, Weekly Cuts

Methuen Area
Call Alex
Parishioner
978-557-1029

PLEASANT VALLEY GARDENS Join Our CSA Program Fresh Vegetables Every Week



978-682-9563
255 Merrimack Street • Methuen
www.pleasantvalleygardens.com



Fr. Tom Nestor has served as pastor at the Collaborative Parishes of Resurrection and Saint Paul in Hingham for the past ten years, and previously served at St. Eulalia's in Winchester for 17 years. A Harvard graduate and native of West Roxbury, Fr. Nestor is known for fostering a sense of community wherever he goes.

donate at
clergytrust.org

—OR—
SCAN HERE for
Venmo, Google/
Apple Pay, PayPal
via Givebutler.



"Important family decisions
become far more difficult
for family members
left behind to make them."



ST. MARY-IMMACULATE CONCEPTION CEMETERIES AND CHAPEL MAUSOLEUM

Jim Jacobs will put you at ease, help you plan and bring you peace of mind.
To receive more information, contact Jim Jacobs at

CALL (978) 682-8181 TODAY

Because of the increased demand among area Catholics, making cemetery plans for their family on a **PRE-NEED** basis, we have completed construction on the new **Our Lady of Good Counsel Chapel Mausoleum** addition.

BILL DELUCA FAMILY OF DEALERSHIPS WWW.BILLDELUCA.COM

BILL DELUCA CHEVROLET CADILLAC 978-475-6200 ANDOVER, MA
BILL DELUCA CHEVROLET BUICK GMC 978-373-7700 HAVERHILL, MA
BILL DELUCA CHRYSLER JEEP DODGE RAM 978-373-9500 HAVERHILL, MA



BRAND NEW LUXURY SENIOR LIVING APARTMENTS



Move In Specials Going On Now!

Enjoy resort-style amenities, beautifully appointed apartment homes, and a community of friends and neighbors.

Schedule a private tour of
our brand new community
(619) 210-0163



197 Howe Street | Methuen, MA 01844 | WoodsAtMerrimack.com

TRANSFORM YOUR HOME

Enjoy up to 50% more space in your kitchen and better access
to your most-used items with our custom pull-out shelves
installed in your **existing cabinets**

ShelfGenie
EVERYTHING WITHIN REACH
a neighborly company

**50% OFF
INSTALLATION***

*Limit one offer per household. Most purchases. Not Classic/Designer Shelves. EXP 7/31/22. Independently owned and operated franchise. © 2022 ShelfGenie SIV LLC. All rights reserved.

12 MONTH NO INTEREST NO PAYMENTS

Schedule Your **FREE** Design Consultation:
(855) 625-9032

"Feed My Sheep" John 21:17

PARK HILL
REAL ESTATE, INC.
FreitasRealtyTeam.com
Office locations in Lowell, Milford
North Andover & Boston
Licensed in MA & NH



Joe Freitas
978-790-6826
Joe@JFreitasRealty.com

Sandra Freitas
978-376-7309
sandrafreitas613@gmail.com



Proud affiliate of Carriage Services, Inc.
3040 Post Oak Blvd., Suite 300, Houston, TX 77056
Tel: 713-332-8400

978-685-5379

www.cataudellafh.com



Fr. Tom Nestor has served as pastor at the Collaborative Parishes of Resurrection and Saint Paul in Hingham for the past ten years, and previously served at St. Eulalia's in Winchester for 17 years. A Harvard graduate and native of West Roxbury, Fr. Nestor is known for fostering a sense of community wherever he goes.

donate at
clergytrust.org

OR
SCAN HERE for
Venmo, Google/
Apple Pay, PayPal
via Givebuttr.



IF YOU LIVE ALONE YOU NEED A MEDICAL ALERT At HOME or AWAY

* GPS * Fall Alert * 24/7 * 365 Monitoring
Ambulance * Police * Fire * Family/Friends



MDMedAlert™

As Low As **\$19⁹⁵**/month



GPS Mobile Above

No Contract • No Fees • Easy Setup • md-medalert.com **CALL 800-890-8615**

Prepare for power outages today

WITH A HOME STANDBY GENERATOR

\$0 MONEY DOWN + LOW MONTHLY PAYMENT OPTIONS

Contact a Generac dealer for full terms and conditions

REQUEST A FREE QUOTE
CALL NOW BEFORE THE NEXT POWER OUTAGE
(855) 401-9893

*To qualify, consumers must request a quote, purchase, install and activate the generator with a participating dealer. Call for a full list of terms and conditions.



GENERAC®

FREE
7-Year Extended
Warranty*
A \$695 Value!

KENNETH H. POLLARD FUNERAL HOME



**Our Family
Helping Your Family**
978-687-7300
pollardfuneralhome.com
233 Lawrence St., Methuen



RGAT
Tire & Auto
Repair
Towing & Recovery
24/7 Towing & Recovery (603) 898-9077
www.RGATIRE.com (603) 505-7671



978-686-1872
Fax: 978-686-1878
Piro's Italian Bakery
300 Merrimack St. • Methuen

A TRADITION OF EXCELLENCE FOR OVER 25 YEARS!

MEMBER - WHITTIER HEALTH NETWORK
HANNAH DUSTON
Healthcare Center

- Skilled Nursing • Respite Care
- Subacute Care • Longterm Care
- Extended Rehabilitation & Restorative Care

126 Monument Street, Haverhill, MA (978) 373-1747 • whittierhealth.com
Accepts all HMO's, Medicare and Commercial Insurance



Paul J. Annaloro, Realtor®
(978) 204-7899
paul.annaloro@remax.net
www.paulannaloro.com



MILLS INSURANCE AGENCY



Todd S. Mills
(978) 686-0826
leidy@jkmillsins.com
www.jkmillsins.com

156 Haverhill St., Methuen Merrimack Plaza



PRM Engineering
Structural Consulting
Tel: (978) 738-8001

www.prmengineering.com
Email: prmeng@prmengengineering.com
Residential and Commercial Designs
PE Licensed: MA, NH, ME, CT
Foundations, Framing, Plans, Reports



Methuen
Co-operative Bank

Robert A. Armano
President & CEO
Parishioner

243 Broadway, Methuen, Massachusetts
978-682-5271 • www.methuencoop.com



All Deposits Insured in Full
Member FDIC & DIF
Equal Opportunity Employer
Equal Housing Lender



McKinnon's
Supermarkets

603-894-6328 (MEAT)
236 N. Broadway • Salem, NH
Come Visit our Website at:
www.ShopMcKinnons.com



BAROD
Home Care Inc.

54 Cummings Park Dr., Suite 332, Woburn, Ma 01801
Phone: 781-281-2764 • Phone: (978) 242-4658
Email: contact@barodhomecare.com
www.barodhomecare.com

Spring Lawn Care Service

Leaf Cleanup, Fertilizing, Overseeding
Aeration, Dethatching, Pruning
Hedging, Mulch Install, Weekly Cuts



Methuen Area
Call Alex
Parishioner
978-557-1029



Certified Nursing Assistant & Home Health Aide - CNA, HHA

Looking to take care of your loved one
Call Maureen @ 978-685-1916 Leave a message.
12 yrs of experience | Excellent References
\$15/hour Mon - Thu | days, evenings and overnight

Monument Sales • Cemetery Lettering



978-674-7035
217 Merrimack St., Methuen



841 Main Street
Tewksbury, MA 01876
(978) 851-9103

Rosaries from Flowers

"Handmade from the Flowers
of your Loved One"
www.rosariesfromflowers.com

"God is Love" 1 John 4:8



ZANNI & PESCE
LAW OFFICES

BANKRUPTCY • REAL ESTATE
ESTATE PLANNING • PERSONAL INJURY
www.zannipescelaw.com
Free Consultation | 978-557-9700

Personal Injury | Estate Planning | Workman's
Family Law | Criminal Defense | Comp

DiFruscia
Law Offices

Call us Today 978-687-1777

www.difruscialaw.com

Serving Clients in Massachusetts
and New Hampshire for 50 years

**AD SPACE
AVAILABLE**
617-779-3771

Jen Hamilton Your Friend In Real Estate

CALL TODAY FOR YOUR FREE MARKET ANALYSIS!



Celebrating 37 Years in Real Estate!

508-954-7941 • jennifer.bower9@comcast.net



Certified Nursing Assistant & Home Health Aide - CNA, HHA

Looking to take care of your loved one
Call Maureen @ 978-685-1916 Leave a message.
12 yrs of experience | Excellent References
\$15/hour Mon - Thu | days, evenings and overnight



FEBLES
LAW OFFICES

240 Pleasant Street, Unit 8, Methuen, MA 01844 • 978-241-7245

Immigration Law Services
"Serving the Merrimack Valley
for Over 15 Years"



"Important family decisions
become far more difficult
for family members
left behind to make them."



Because of the increased
demand among area
Catholics, making
cemetery plans for
their family on a
PRE-NEED basis,
we have completed
construction on the new
Our Lady of Good Counsel
Chapel Mausoleum
addition.

**ST. MARY-IMMACULATE CONCEPTION
CEMETERIES AND CHAPEL MAUSOLEUM**

Jim Jacobs will put you at ease, help you plan and bring you peace of mind.
To receive more information, contact Jim Jacobs at

CALL (978) 682-8181 TODAY

